

ORDER OF SHEETS

Section No.	1	Title
Section No.	2	Typical Sections and Details
Section No.	3	Estimate of Quantities
Section No.	3	Miscellaneous Quantities
Section No.	4	Right of Way Plat
Section No.	5	Plan and Profile
Section No.	6	Standard Detail Drawings
Section No.	7	Sign Plates
Section No.	8	Structure Plans
Section No.	9	Computer Earthwork Data
Section No.	9	Cross Sections

TOTAL SHEETS = 35

CITY OF CHIPPEWA FALLS

PLAN OF PROPOSED IMPROVEMENT

GARDEN STREET

WEST TERMINUS TO PARK AVENUE

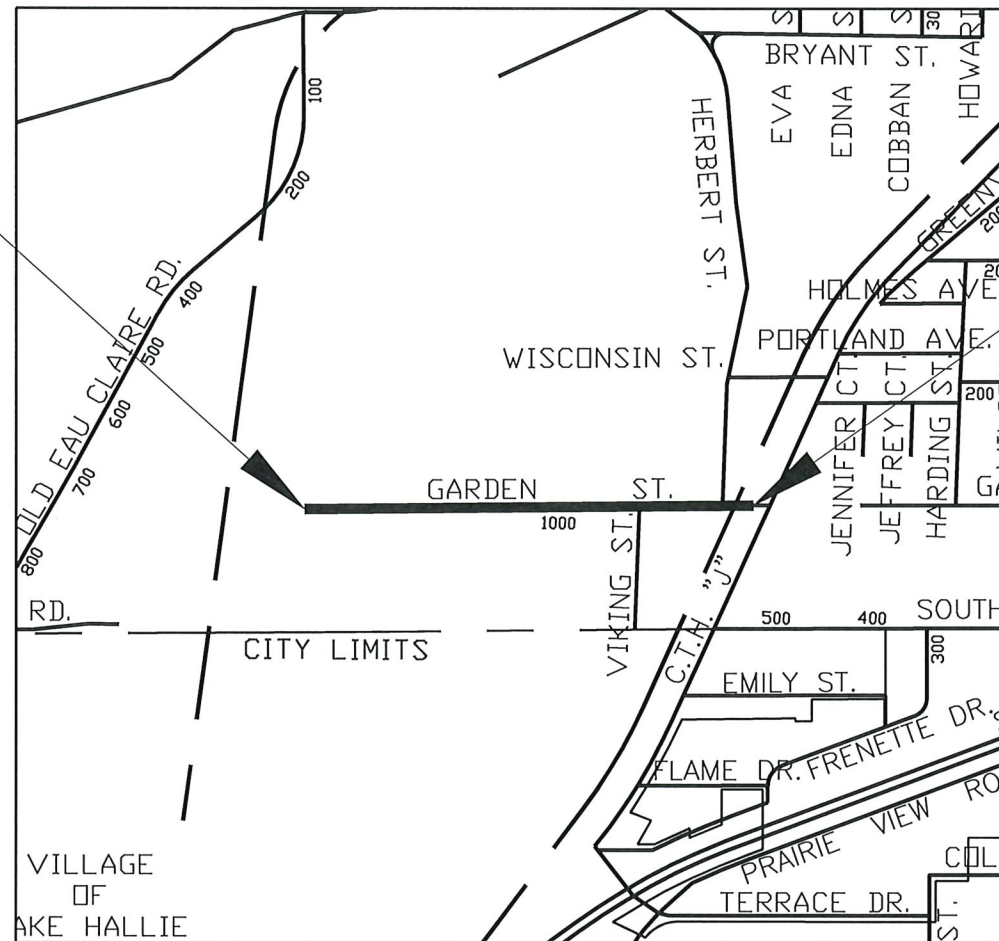
CHIPPEWA COUNTY



BEGIN PROJECT
STA 10+00.00

Y=122516.62
X=167800.40

END PROJECT
STA 32+34



DESIGN DESIGNATION

A.A.D.T.	2023	=	267
A.A.D.T.	2044	=	329
D.H.V.		=	N/A
D.D.		=	50/50
T.		=	28.5
DESIGN SPEED		=	25
ESALS		=	102,200

CONVENTIONAL SYMBOLS

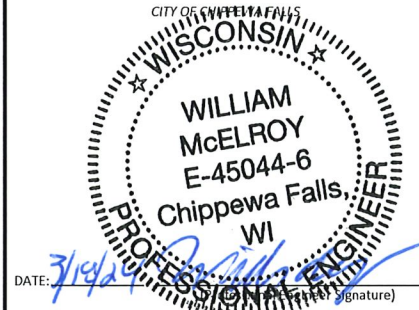
PLAN	PROFILE
CORPORATE LIMITS	GRADE LINE
PROPERTY LINE	ORIGINAL GROUND
LOT LINE	MARSH OR ROCK PROFILE (To be noted as such)
LIMITED HIGHWAY EASEMENT	SPECIAL DITCH
EXISTING RIGHT OF WAY	GRADE ELEVATION
PROPOSED OR NEW R/W LINE	CULVERT (Profile View)
SLOPE INTERCEPT	UTILITIES
REFERENCE LINE	ELECTRIC
EXISTING CULVERT	FIBER OPTIC
PROPOSED CULVERT (Box or Pipe)	GAS
COMBUSTIBLE FLUIDS	SANITARY SEWER
MARSH AREA	STORM SEWER
WOODED OR SHRUB AREA	TELEPHONE
	WATER
	UTILITY PEDESTAL
	POWER POLE
	TELEPHONE POLE

LAYOUT
SCALE 0 1000 FT
TOTAL NET LENGTH OF CENTERLINE = 0.423 MI

HORIZONTAL POSITIONS SHOWN ON THIS PLAN ARE WISCONSIN COORDINATE REFERENCE SYSTEM (WISCRS), CHIPPEWA NAD83 (2011), IN U.S. SURVEY FEET. POSITIONS SHOWN ARE GRID COORDINATES, GRID BEARINGS, AND GRID DISTANCES. GRID DISTANCES ARE THE SAME AS GROUND DISTANCES. ELEVATIONS ARE REFERENCED TO NAVD 88 (2018).

COUNTY: CHIPPEWA

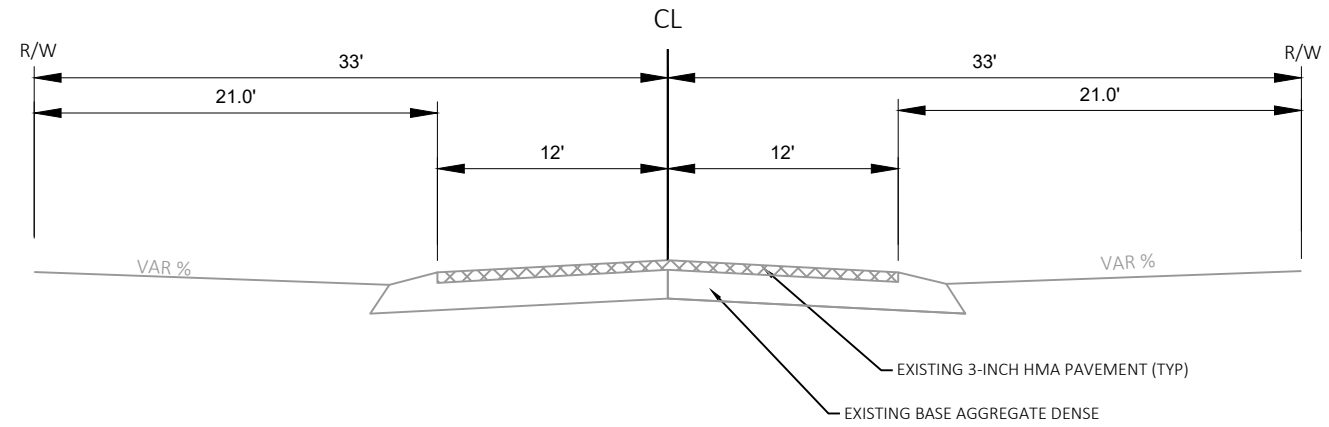
ORIGINAL PLANS PREPARED BY



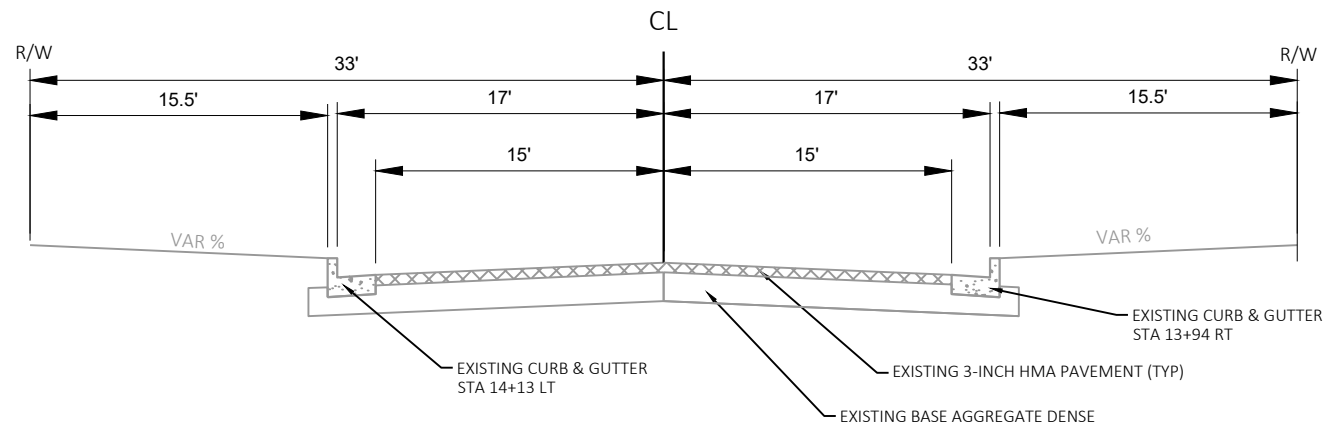
CITY OF CHIPPEWA FALLS

PREPARED BY
Surveyor: RUSSELL SCHEMENAUER
Designer: RUSSELL SCHEMENAUER
Project Manager: BILL McELROY

E



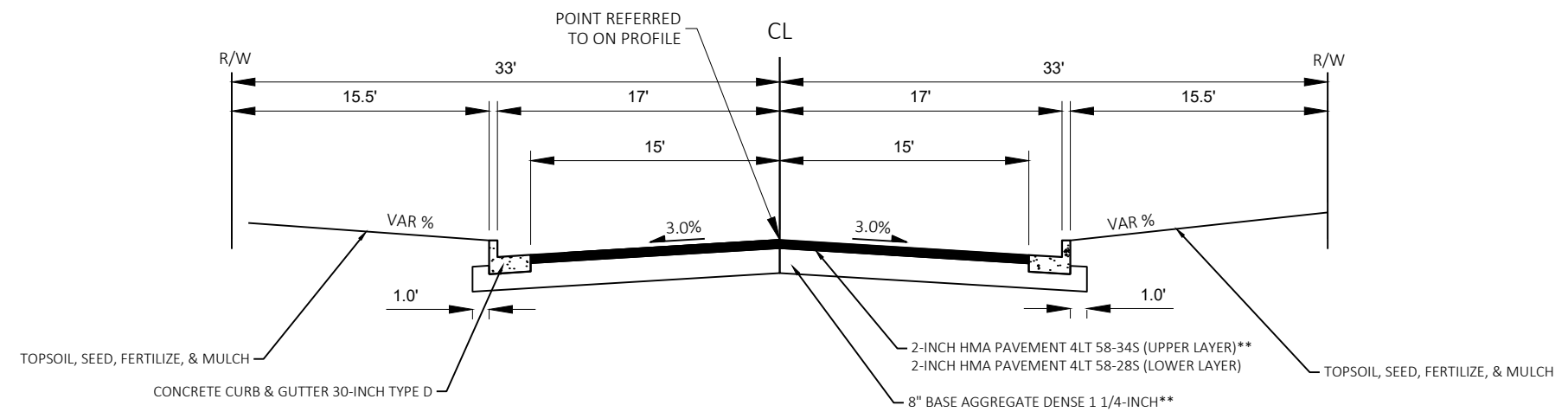
GARDEN STREET EXISTING TYPICAL SECTION
 STA 10+15 - (13+94RT/14+13LT)



GARDEN STREET EXISTING TYPICAL SECTION
 STA (14+13 LT/13+94RT) - (31+32.3 LT/30+88.6 RT)

GARDEN STREET CUL-DE-SAC

SEE INTERSECTION DETAIL
(WEST TERMINI GARDEN ST)
66' ROW
28' RAD FLAG OF CURB
36" FLUME CURB
2" HMA 4LT58-34S UPPER LIFT
2" HMA 4LT58-28S LOWER LIFT
8" 1 1/4" CABC



GARDEN STREET FINISHED TYPICAL SECTION

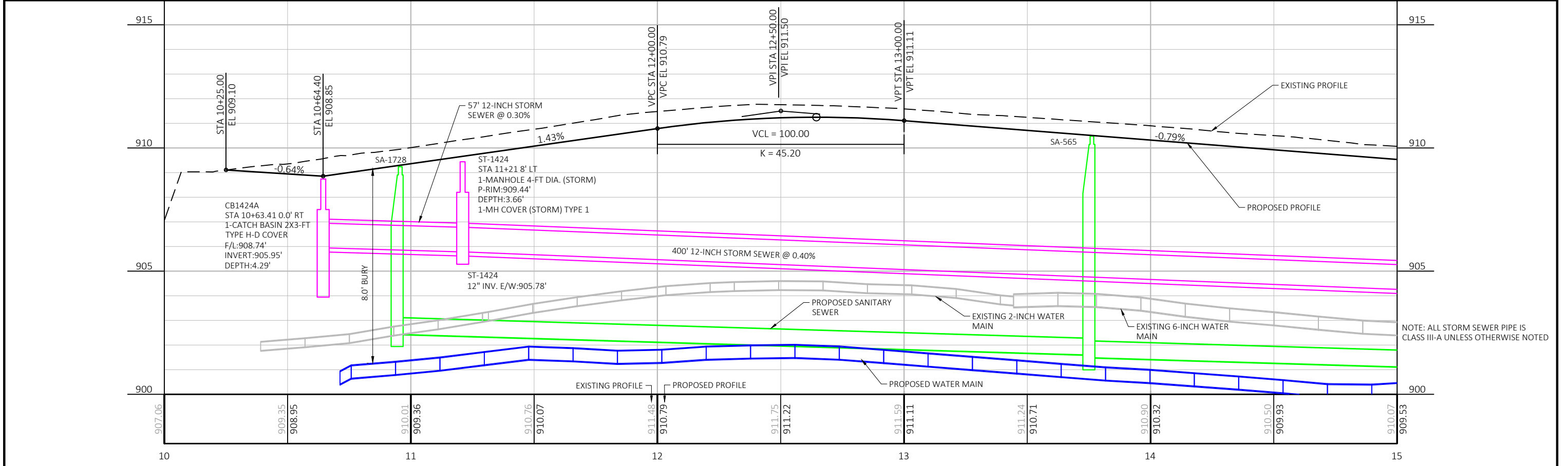
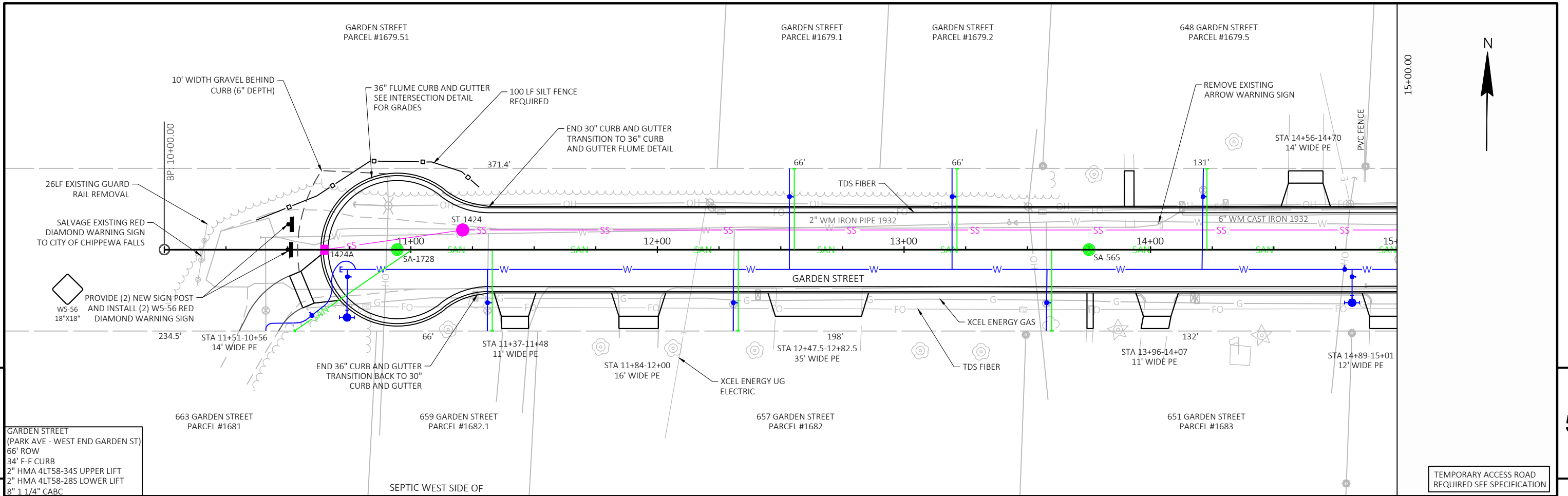
STA 11+31.71 - 31+39.5 (END OF PROPOSED CURB AND GUTTER)

**REPLACE SIDE ROADS TO EXISTING PAVEMENT STRUCTURE

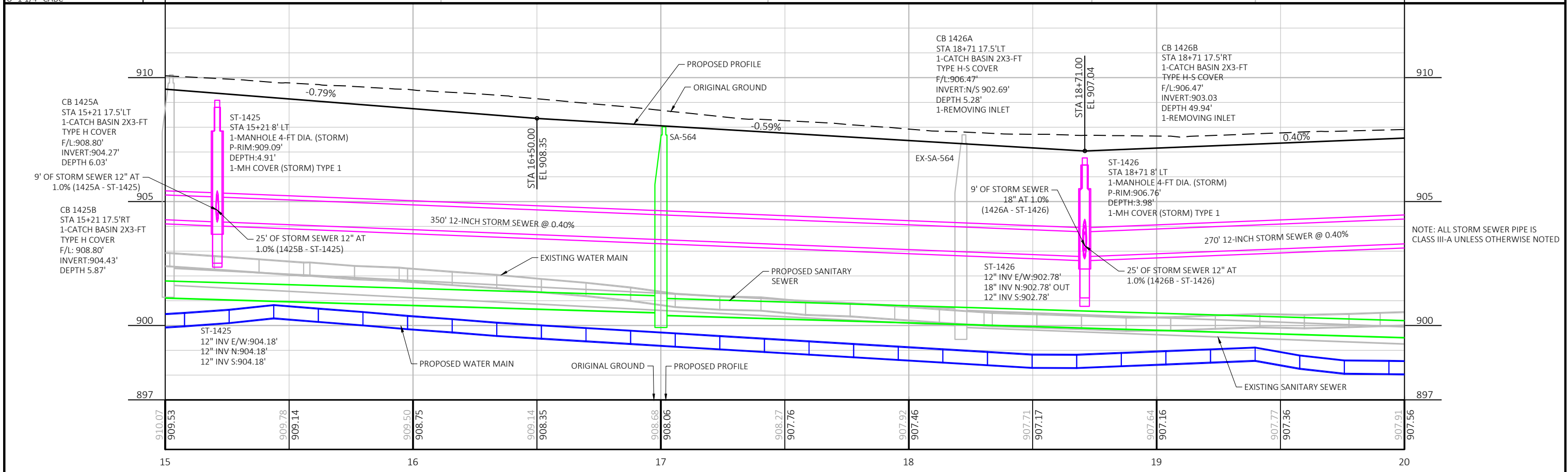
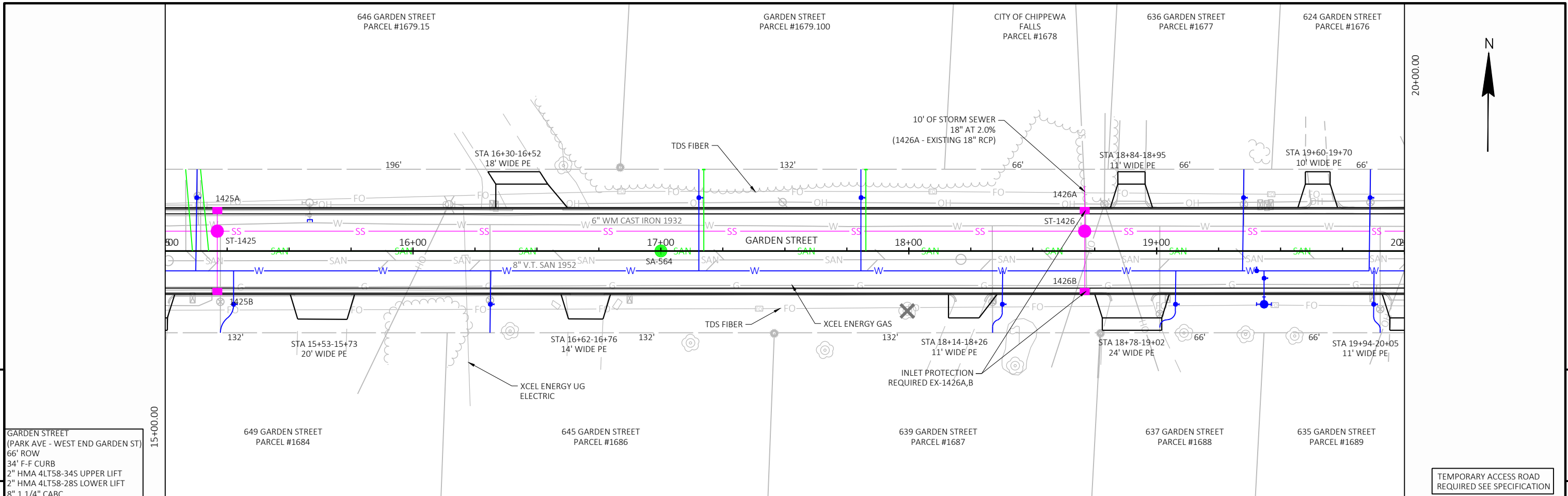
ASPHALT SHALL BE 1/4-INCH HIGHER THAN FLAG ELEVATION

ASPHALT SHALL BE 1/2-INCH HIGHER THAN ALL MANHOLE CASTINGS

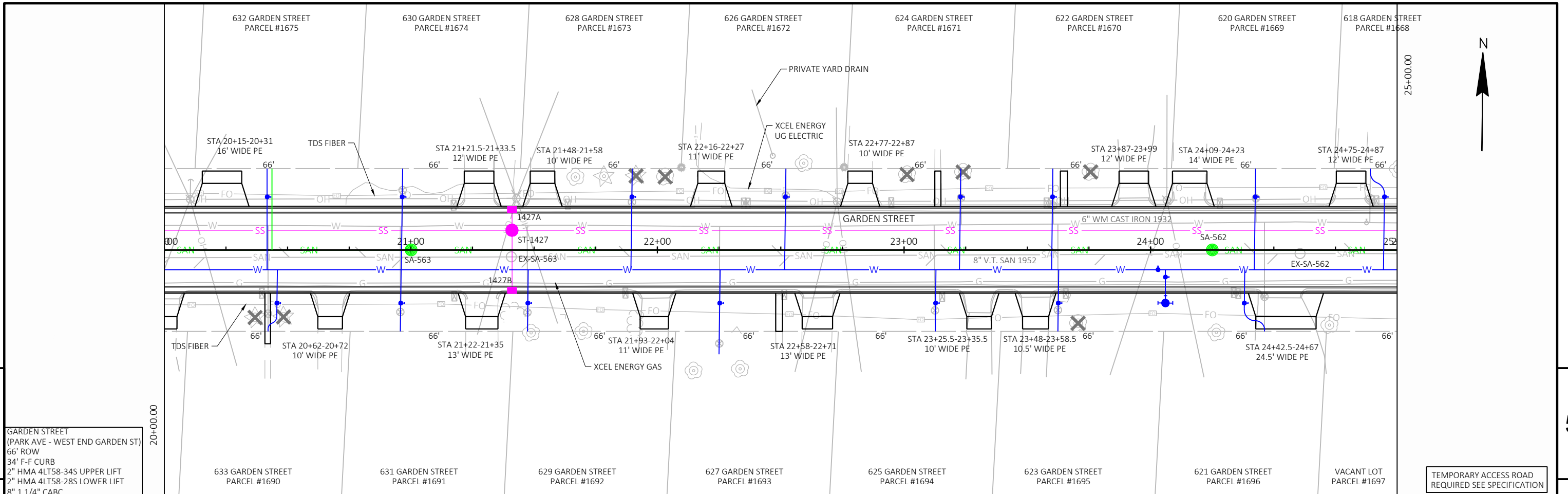
PROJECT NO:	HWY:	COUNTY: CHIPPEWA	FINISHED TYPICAL SECTIONS GARDEN STREET	SHEET	E
-------------	------	------------------	---	-------	----------



PROJECT NO: NA	HWY: GARDEN STREET	COUNTY: CHIPPEWA	PLAN AND PROFILE: STORM SEWER & CENTERLINE	SHEET 5
----------------	--------------------	------------------	--	---------

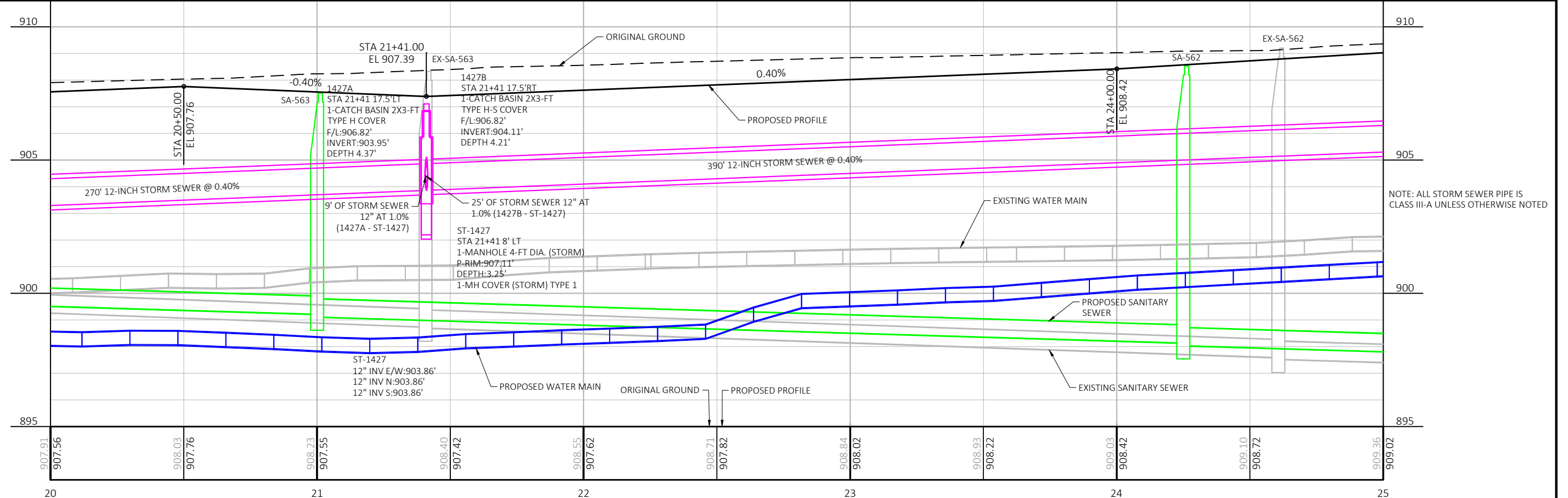


PROJECT NO: NA	HWY: GARDEN STREET	COUNTY: CHIPPEWA	PLAN AND PROFILE: CENTERLINE & STORM SEWER	SHEET 5
----------------	--------------------	------------------	--	---------

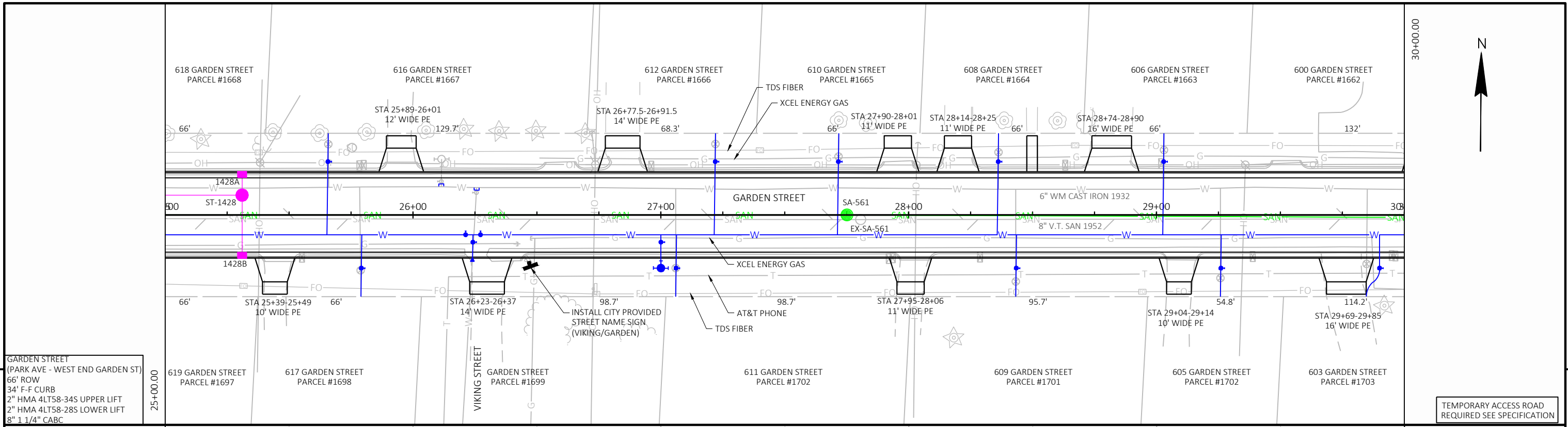


5
 GARDEN STREET
 (PARK AVE - WEST END GARDEN ST)
 66' ROW
 34' F-F CURB
 2" HMA 4LT58-34S UPPER LIFT
 2" HMA 4LT58-28S LOWER LIFT
 8" 1 1/4" CABC

TEMPORARY ACCESS ROAD
 REQUIRED SEE SPECIFICATION

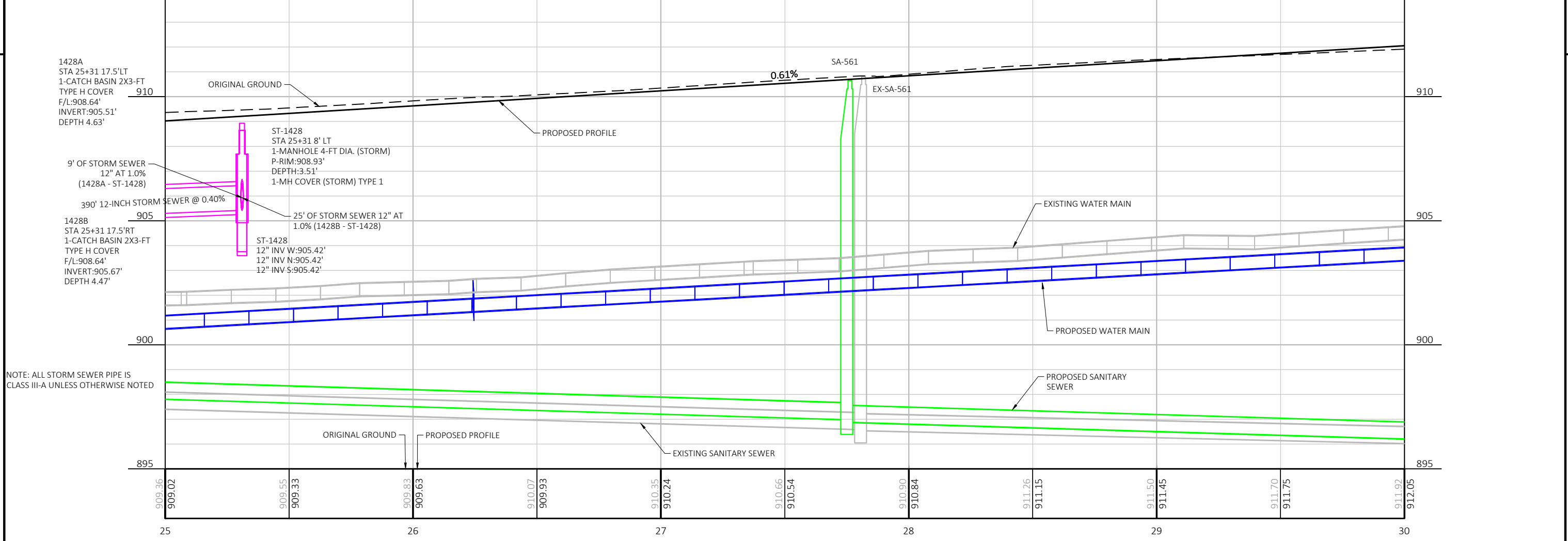


PROJECT NO: NA HWY: GARDEN STREET COUNTY: CHIPPEWA PLAN AND PROFILE: STORM SEWER & CENTERLINE SHEET: E

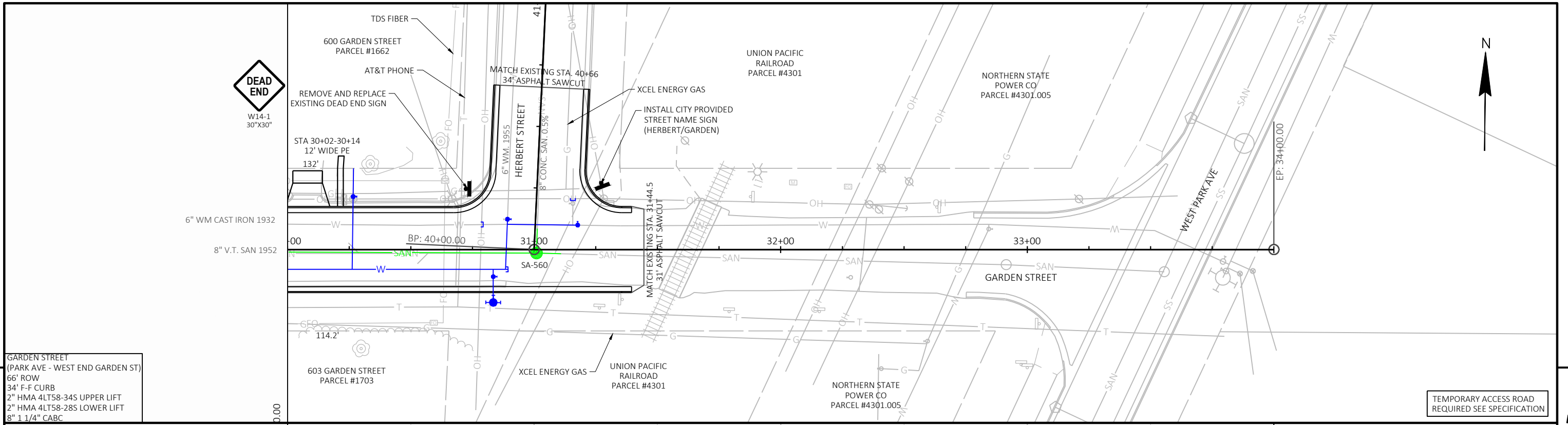


GARDEN STREET
(PARK AVE - WEST END GARDEN ST)
66' ROW
34" F-F CURB
2" HMA 4LTS8-34S UPPER LIFT
2" HMA 4LTS8-28S LOWER LIFT
8" 1 1/4" CABC

TEMPORARY ACCESS ROAD
REQUIRED SEE SPECIFICATION

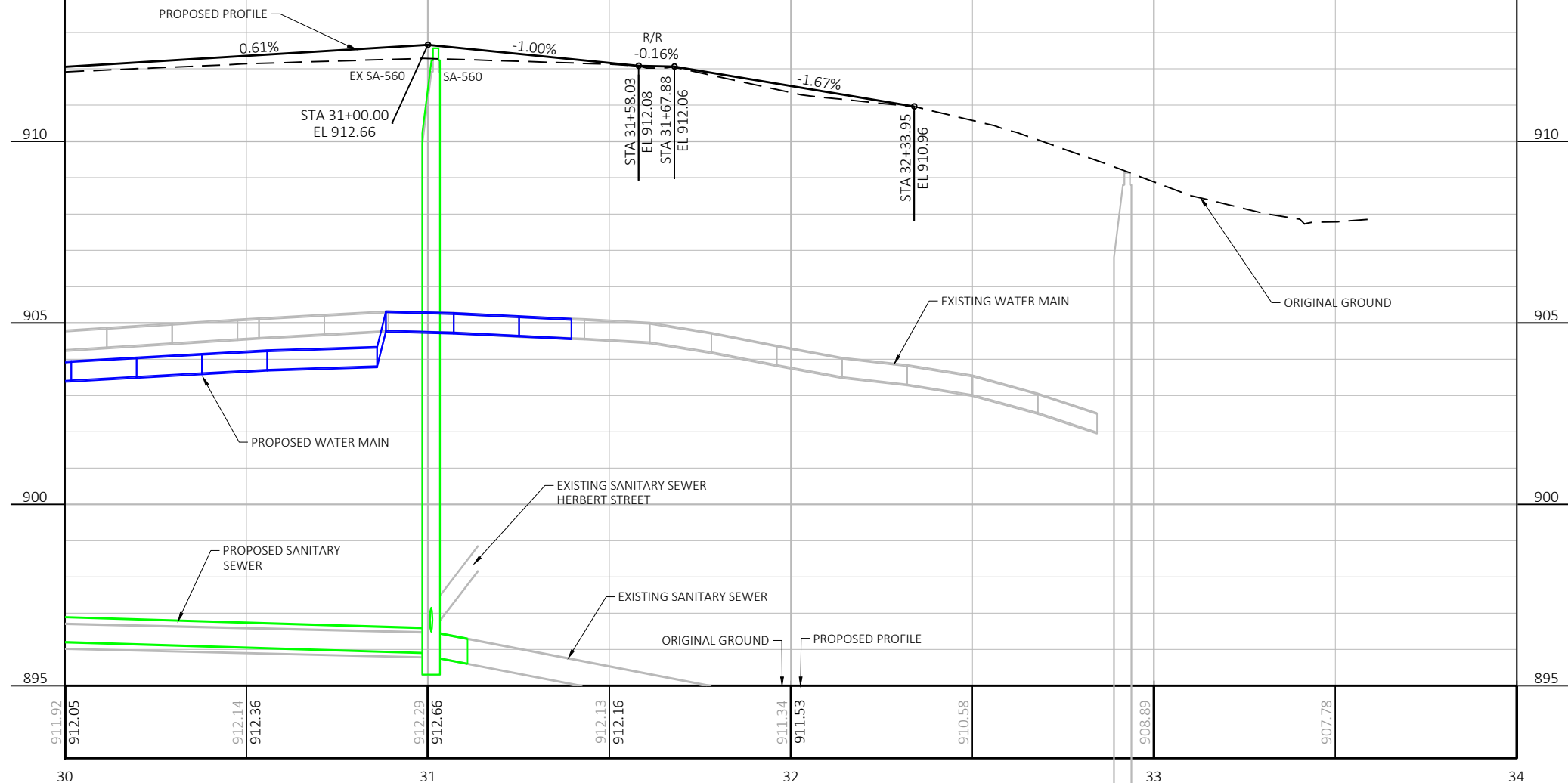


PROJECT NO: NA	HWY: GARDEN STREET	COUNTY: CHIPPEWA	PLAN AND PROFILE: STORM SEWER & CENTERLINE	SHEET	E
----------------	--------------------	------------------	--	-------	---

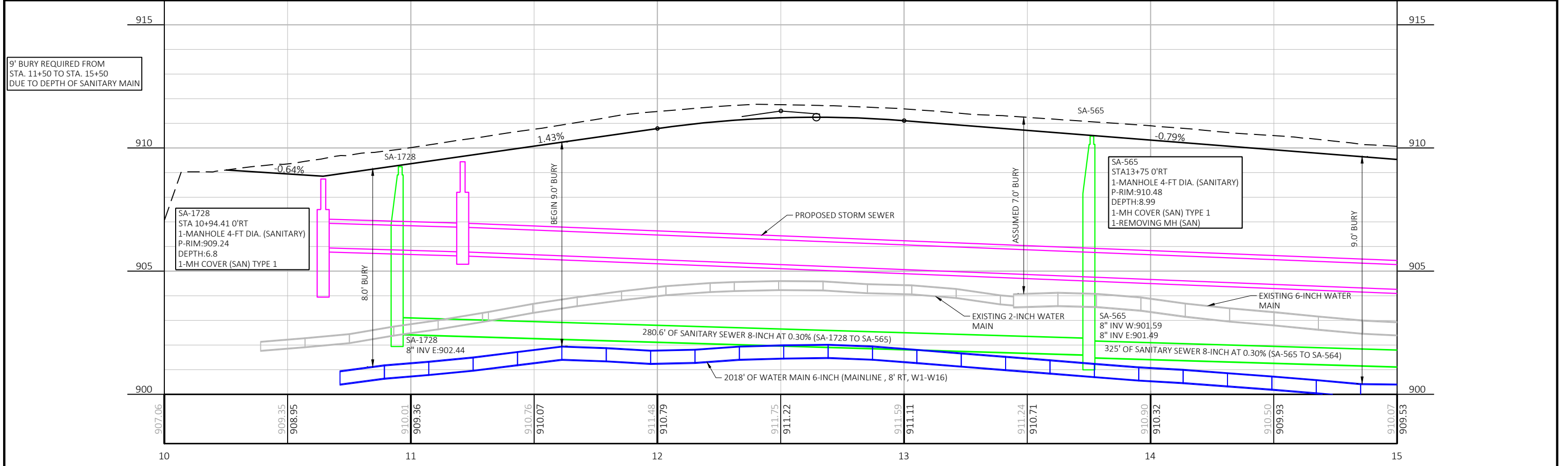
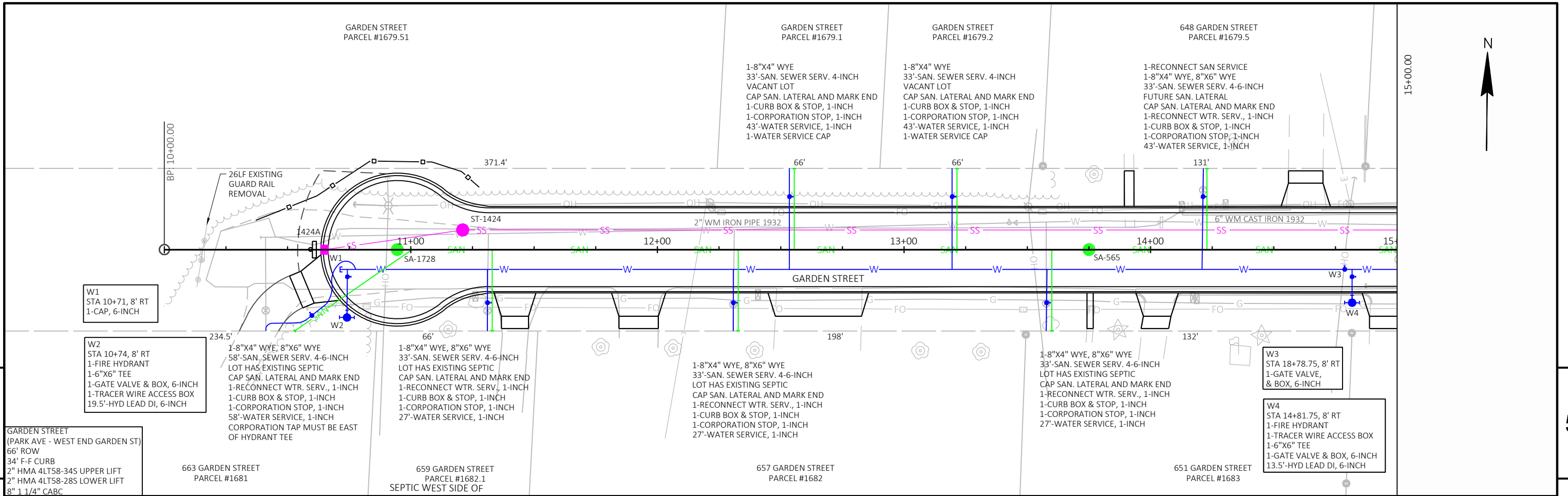


GARDEN STREET
(PARK AVE - WEST END GARDEN ST)
66' ROW
34' F-F CURB
2" HMA 4LT58-34S UPPER LIFT
2" HMA 4LT58-28S LOWER LIFT
8" 1 1/4" CABC

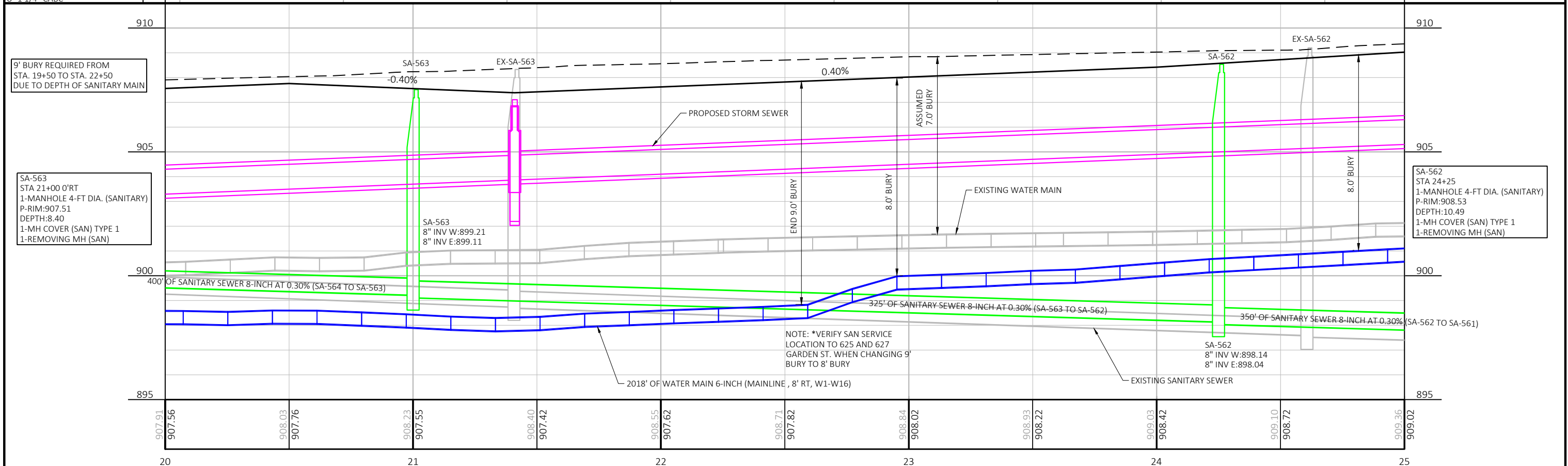
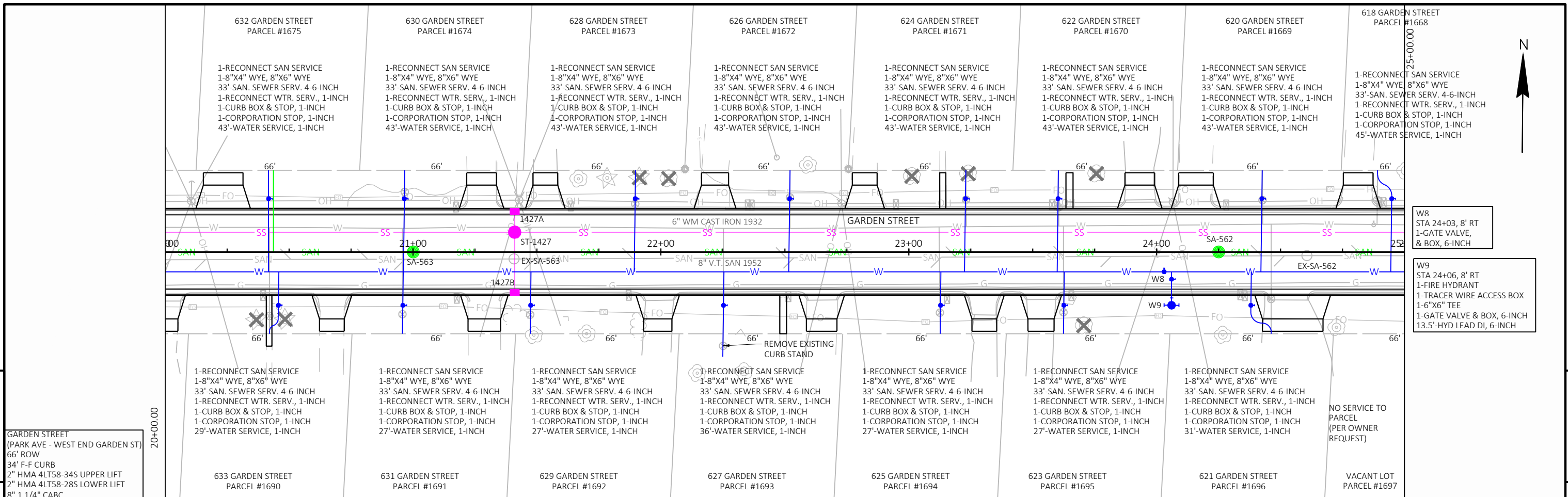
TEMPORARY ACCESS ROAD
REQUIRED SEE SPECIFICATION



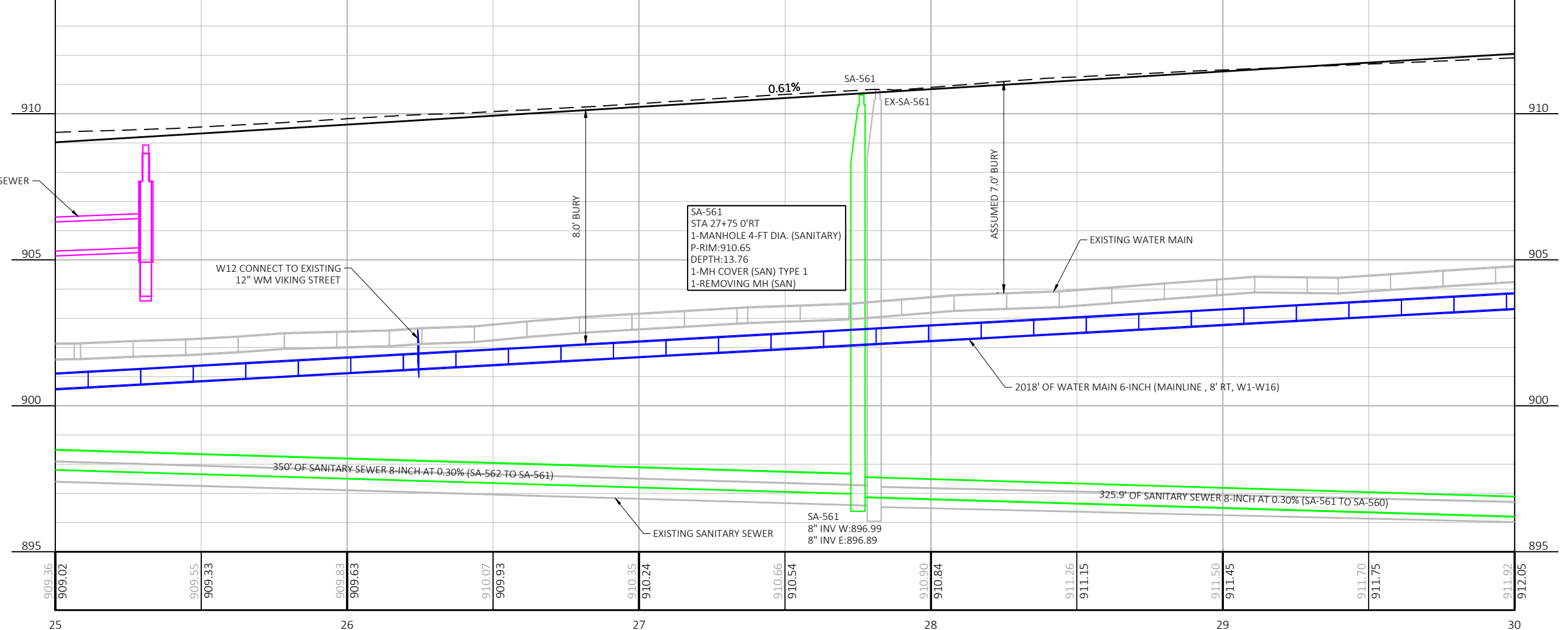
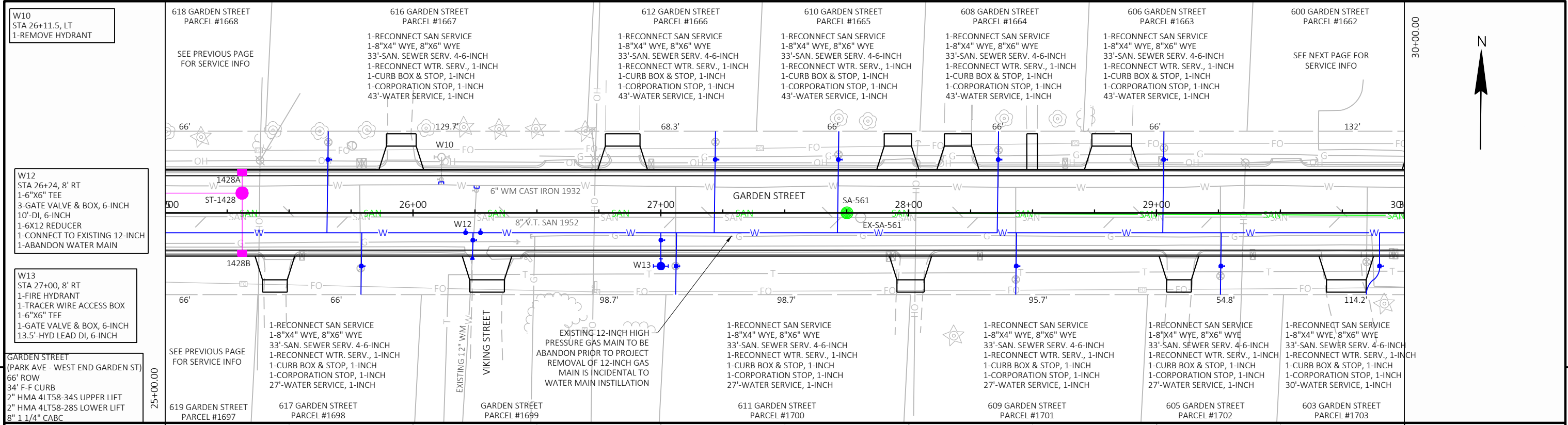
PROJECT NO: NA	HWY: GARDEN STREET	COUNTY: CHIPPEWA	PLAN AND PROFILE: STORM SEWER & CENTERLINE	SHEET	E
----------------	--------------------	------------------	--	-------	---



PROJECT NO: NA	HWY: GARDEN STREET	COUNTY: CHIPPEWA	PLAN AND PROFILE: SANITARY AND WATER UTILITY	SHEET E
----------------	--------------------	------------------	--	---------



PROJECT NO:	NA	HWY:	GARDEN STREET	COUNTY:	CHIPPEWA	PLAN AND PROFILE:	SANITARY AND WATER UTILITY	SHEET	5
-------------	----	------	---------------	---------	----------	-------------------	----------------------------	-------	---



PROJECT NO: NA	HWY: GARDEN STREET	COUNTY: CHIPPEWA	PLAN AND PROFILE: SANITARY AND WATER UTILITY	SHEET 5
----------------	--------------------	------------------	--	---------

W15
 STA 30.83.4, 8' RT
 1-FIRE HYDRANT
 1-TRACER WIRE ACCESS BOX
 1-6"X6" TEE
 1-GATE VALVE & BOX, 6-INCH
 13.5'-HYD LEAD DI, 6-INCH

W16
 STA 30+88.4, 8' RT
 1-6X6 TEE
 1- 6-INCH PLUG

W17
 STA 30+89, 10' LT
 1-6X6 TEE
 1-GATE VALVE & BOX, 6-INCH
 1-CONNECT TO EXISTING
 1-ABANDON WATER MAIN
 SALVAGE EXISTING 6-INCH VALVE
 TO CITY OF CHIPPEWA FALLS

W18
 STA 31+17.6, 10' LT
 1-GATE VALVE & BOX, 6-INCH
 1- CONNECT TO EXISTING
 1-ABANDON WATER MAIN

GARDEN STREET
 (PARK AVE - WEST END GARDEN ST)
 66' ROW
 34' F-F CURB
 2" HMA 4LTS8-34S UPPER LIFT
 2" HMA 4LTS8-28S LOWER LIFT
 8" 1 1/4" CAB

